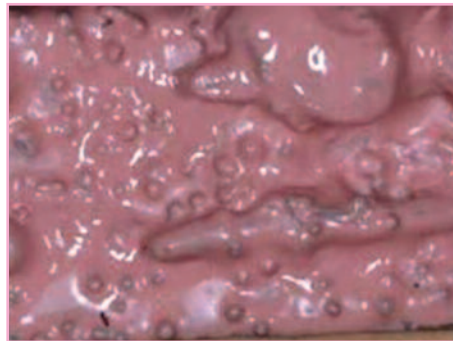
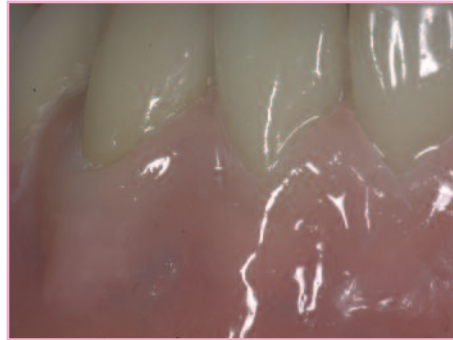


GINGIVAL AESTHETICS IN TENDER PINK COMPOSITE

of Mr. Daniele Rondoni



OPAQUE TENDER PINK

Pink Opaque is used to mask the metal structure after the application of Tender Metal Primer.

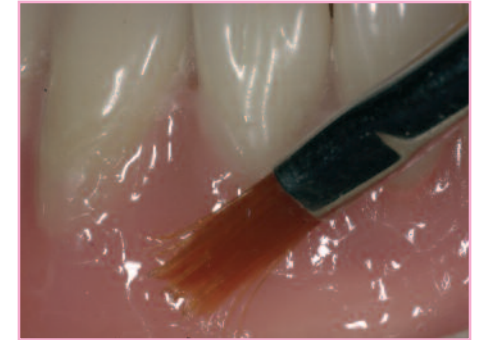
To reproduce the light brown coloration of the bone tissue, it is possible to use Opaque Tender light or dark, also mixed together.

Opaque Tender Pink

The evolution of composite materials can result necessary for the reproduction of prosthetic components such as gingival flanges. When the restoration is not limited to the dental part, the mouth aesthetics depends also on the natural reconstruction of the pink tissues. The possibility of reproducing a pink aesthetics contributes to the camouflage of the restoration.

The natural mucosa, even having different chromatic characteristics from the tooth, expresses a brightness grade which gives an healthy and pleasing aspect to what is considered as the "natural setting". So it becomes important to use a material that, in addition to the chromatic stability and to its surface resistance, is able to give brightness to the gingival areas, too.

For this reason, it is necessary to use a new generation composite material in the more visible areas, because the working simplicity and the polishing become a necessary support both in the extensive removable or complex prosthesis on implants and in combination of composite or ceramic tooth.



After the reduction of the area that are requested to be covered with composite, it is important to sandblast the surface and to apply the Tender Bonding Fluid.



The Tender Bonding Fluid, after a 1 minute light cure, will give a perfect adhesion to the pink covering composite. The basis in Acrylic Temp through the TBF, becomes compatible with the HFO and HRi composites.

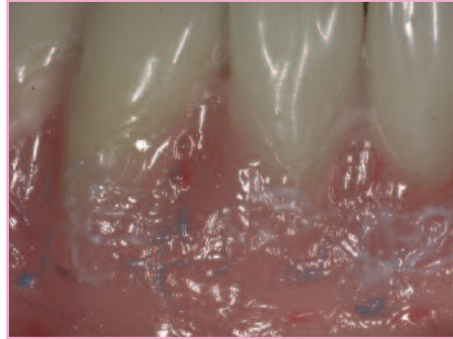


The shade of the gum in nature are multicoloured and then, after an individual analysis, it is important to have at one's disposal different masses of colours in different chromaticity and opacity, which can be used alone or can be mixed together or combined with the stain colours.

Only by using such technique it will be possible to reproduce the natural effects of the gum. From the technical point of view it is important to know that the application has to be in increments, light cured, combined with a final post curing. The use of this pink composite can be completed by using acrylic based Tender Pink on flanges.

PINK COMPOSITE SHADES

The basic 4 shades can be mixed together, and if you need more chromatic variations this can be obtained by mixing with white, blue, red stain. Stains can be fixed by pre-curing before the application of the pink shades.



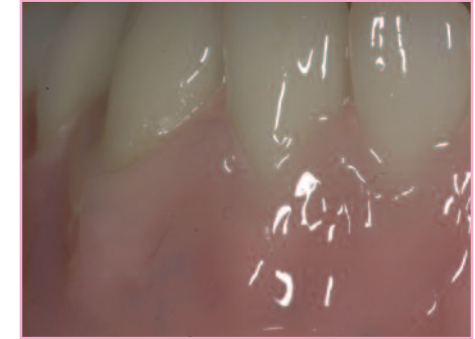
White Stain: increases the opacity and shade of ischemic papilla or in bone prominence area.

Red Stain: increases the chromaticity of pink composite, simulating veins

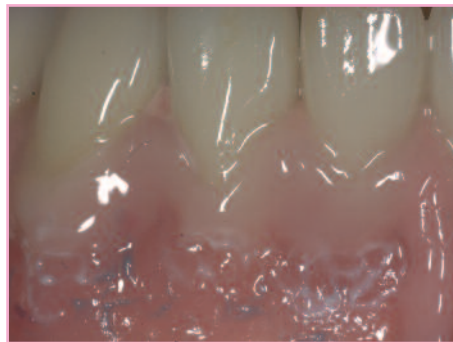
Blue Stain: increases effects in foramen and small veins.



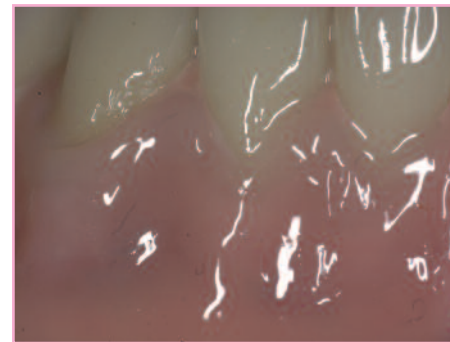
Tender Pink Light: it is a light pink transparent mass which reproduces the over-radicular area where the mucosa is more thick and transparent and it takes the reflected light shade of the below bone.



Tender Pink Dark: The pink-violet transparent shade reproduces the less thick and less adherent to the bone gum, highly blood supplied with a red blue shade in the area of the foramen. By mixing with Stain blue and Red the colour of the veins of the natural gum can be enhanced



Tender Pink Transparent: The transparent pink shade is used to reproduce the area over the tooth root where the gum is tight and transparent. In combination with White or Red Stain is used to reproduce the frenum shade that differs from gingival shades.



Tender Pink Orange: The opaque basic shade is the same as Enamel Temp pink, it is used as first layer or combined with White Stain reproduces the typical colour of bone prominence of natural flanges.



After post-curing we polishing will be completed following the Shiny Technique.